

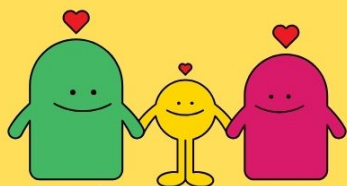


A CHILDREN'S GUIDE TO PRE-OPERATIONAL COMFORTABILITY



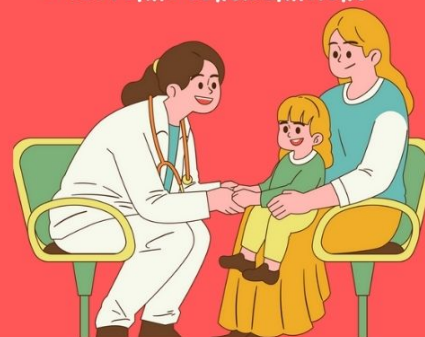
TARGET POPULATION

- CHILDREN FROM AGES 2-7
- PARENTS/CAREGIVERS



ASSESSMENT CONSIDERATIONS

- INPUT FROM THE CHILD: WHAT THEY SAY AND HOW THEY EXPRESS THEMSELVES WITHOUT WORDS.
- INFORMATION FROM THE PARENT(S): DETAILS ABOUT THE CHILD'S BEHAVIOR, HEALTH, AND ANY CONCERNS THEY HAVE.
- OBSERVATIONS: WATCHING HOW THE CHILD BEHAVES AND INTERPRETING HOW THEY INTERACT WITH THEIR PARENT(S).
- PATIENT'S DEVELOPMENTAL STAGE
- PATIENT'S NEEDS AND DISLIKES
- CULTURAL CONSIDERATIONS



(SAMS & KEENAN, 2017)

ADDRESSING THE NEED FOR PATIENT EDUCATION:

- PRESENTS TOPIC IN A FUN AND NON-SCARY WAY
- PROMPTS SHARED CONVERSATION AND COMFORT AROUND THE TOPIC



ADDRESSING THE NEED FOR COPING RELATED TO STRESS:

- COPING RESOURCES AVAILABLE TO SPREAD AWARENESS
- HELPS THE PARENTS PARTICIPATE MORE IN THE CHILD'S CARE TO RELIEVE STRESS

ADDRESSING THE NEED FOR PARENTAL EDUCATION:

- INFORMATION REGARDING WHAT TO EXPECT FOR THE PROCEDURE
- HELPS PARENTS KNOW WHAT INFORMATION TO GIVE TO THEIR CHILD



STRATEGIES

- FRENCH + ENGLISH VERSIONS
- COMFORT ITEMS SUCH AS BLANKETS OR STUFFED ANIMALS IN TEACHING MATERIAL
- ENSURING A SAFE, COMFORTABLE, DISTRACTION FREE ENVIRONMENT



STRESS MANAGEMENT RESOURCES
(HEALTHLINKBC, 2022)



THEORETICAL FOUNDATION

- PIAGET'S THEORY OF COGNITIVE DEVELOPMENT, PERIOD 2: PRE-OPERATIONAL (2-7 YEARS).
- CHILDREN AT THIS STAGE CAN USE THE PICTURES AND SIMPLE WORDS IN OUR BOOK, ALONGSIDE THEIR PARENT OR CAREGIVER, TO FEEL MORE COMFORTABLE BEFORE THEIR SURGERY.
- ERIKSON'S STAGES OF LIFE, AUTONOMY VERSUS SENSE OF SHAME AND DOUBT (TODDLER, 1-3 YEARS)
- INITIATIVE VERSUS GUILT (PRESCHOOL, 3-6 YEARS).
- OUR BOOK WILL WORK WELL FOR THESE STAGES BY HELPING THE CHILD DEVELOP CONFIDENCE, INDEPENDENCE AND USING THEIR IMAGINATION.

(LETOURNEAU, 2019)

STRENGTHS:

- EDUCATES TODDLERS ON WHAT TO EXPECT FROM SURGERY
- TODDLERS CAN KEEP THE BOOK FOR FUTURE REFERENCE
- HELPS REDUCE STRESS AND ESTABLISH TRUST BEFORE GOING FOR SURGERY
- GIVES A VISUAL FOR TODDLERS

WEAKNESSES:

- IF THE TODDLER DOESN'T LIKE TO READ
- IF THE TODDLER HAS A SHORT ATTENTION SPAN
- IF THE TODDLER HAS A DEVELOPMENTAL DELAY

STEPH, CHANTEL, EMMA, AND KENZIE

